

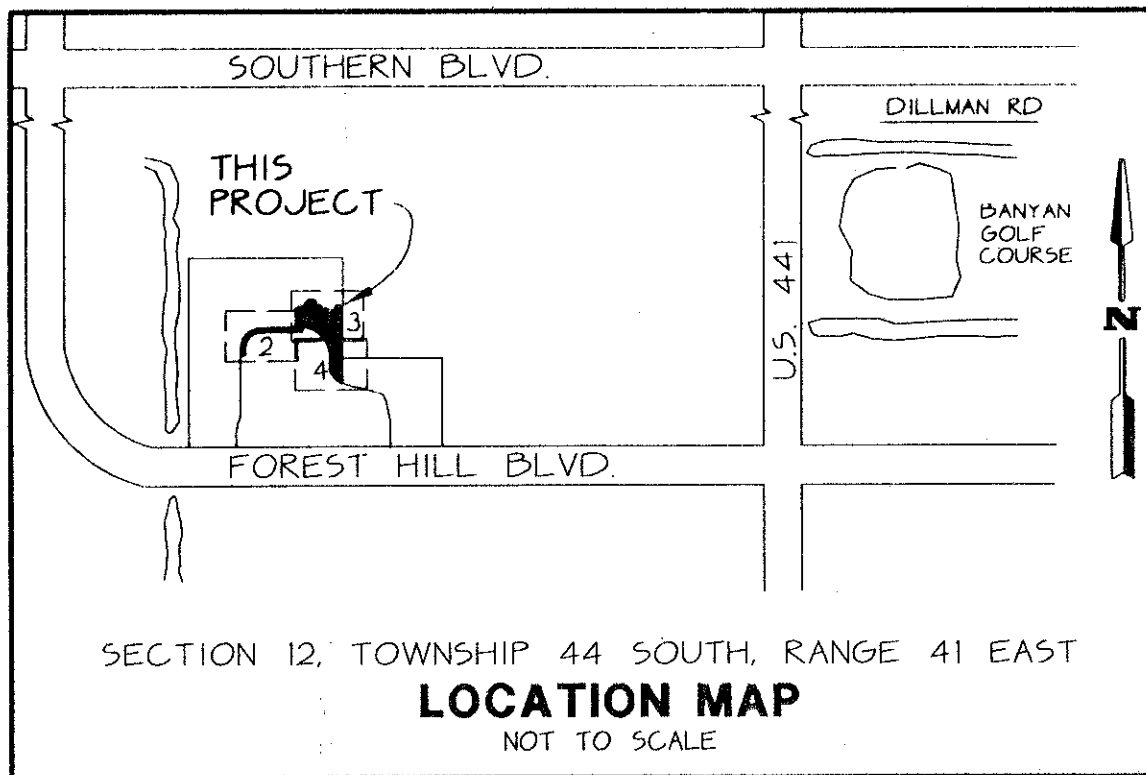
WELLINGTON'S EDGE, PARCEL 77 - PHASE 1, A P.U.D.

166

A PORTION OF THE SOUTHWEST ONE-QUARTER (SW 1/4) OF SECTION 12, TOWNSHIP 44 SOUTH, RANGE 41 EAST, PALM BEACH COUNTY, FLORIDA

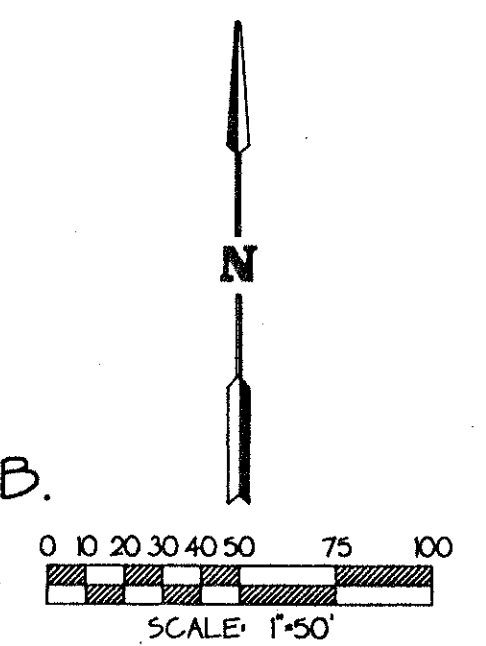
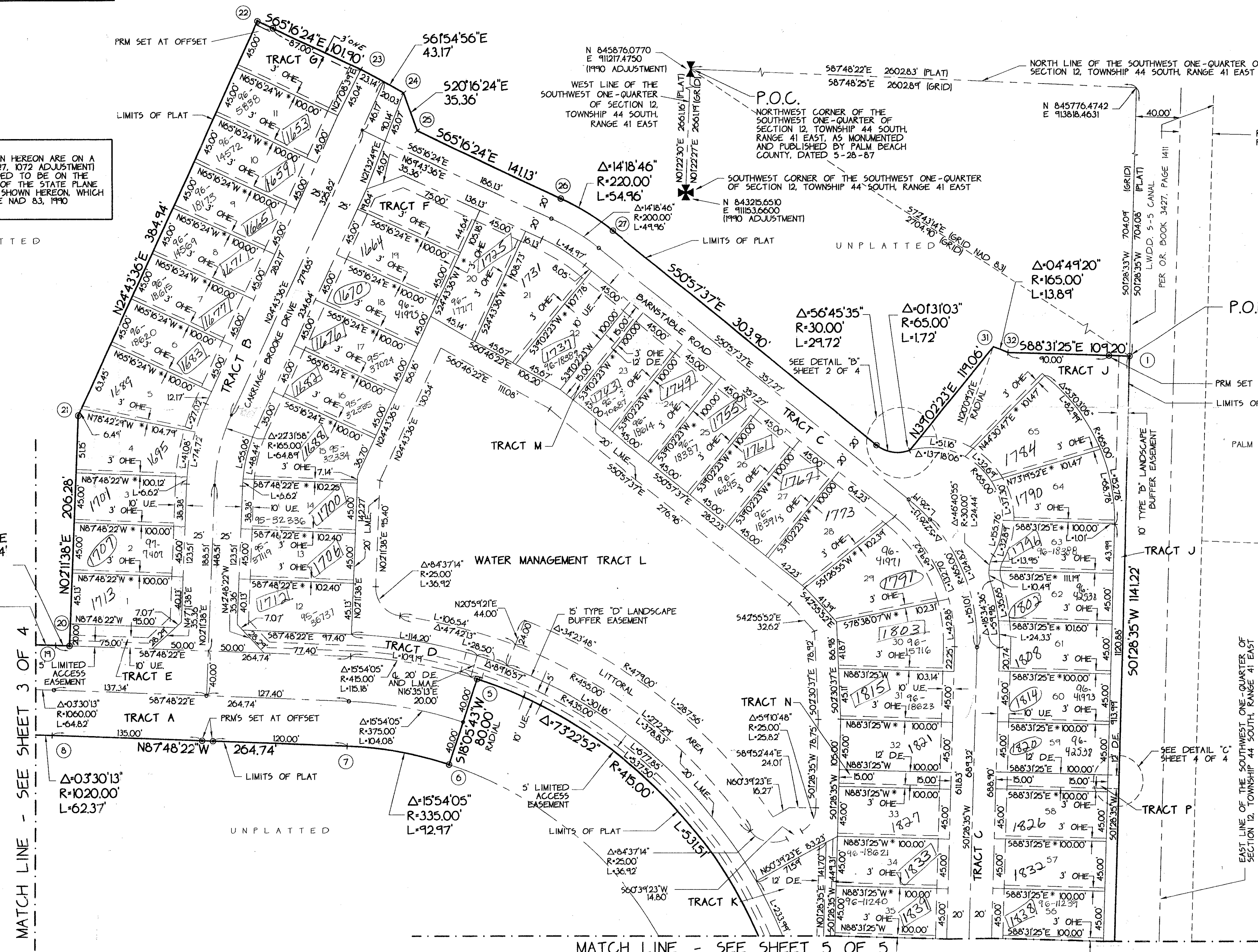
THIS INSTRUMENT PREPARED BY JAMES E. PARK, P.L.S.
WILLIAMS, HATFIELD & STONER, INC. - ENGINEERS PLANNERS SURVEYORS
1901 SOUTH CONGRESS AVENUE, SUITE 150, BOYNTON BEACH, FLORIDA 33426

SHEET 4 OF 5



NOTE:
FLAT BEARINGS SHOWN HEREON ARE ON A GRID AZIMUTH NAD 27, 1072 ADJUSTMENT AND ARE NOT INTENDED TO BE ON THE SAME GRID BEARING OF THE STATE PLANE COORDINATE VALUES SHOWN HEREON, WHICH ARE BASED UPON THE NAD 83, 1990 ADJUSTMENT.

UNPLATTED



PET. 86-32N
5/2/14G

MATCH LINE - SEE SHEET 3 OF 4

MATCH LINE - SEE SHEET 5 OF 5

0332-113

WELLINGTON'S EDGE
PARCEL 77
PHASE 1
SUBDIVISION MAP
DATE: 5/2/14
BY: JEP
CHECKED: JES
DATE: 5/2/14

TAZ-737